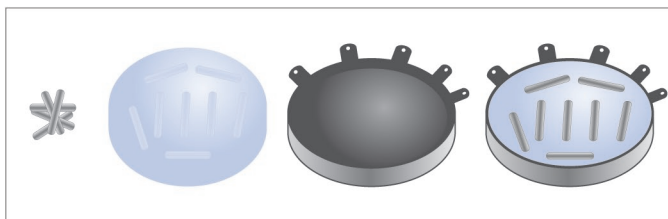
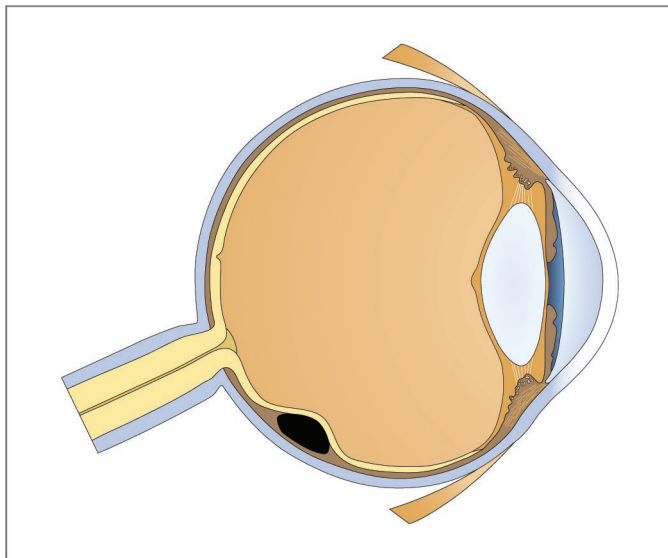




Expanding Brachytherapy Options
Throughout the Body

EYE PLAQUE BRACHYTHERAPY IS A SAFE AND EFFECTIVE MEANS OF EYE PRESERVATION IN CASES OF OCULAR MELANOMA¹



Eye Plaque Treatment Using Cesium-131 Provides the Following Advantages:

- Cesium-131 provides better dose homogeneity than either Iodine-125 or Palladium-103.^{2,3}
- Cesium-131 allows for greater penetration of therapeutic dose while maintaining lower scleral dose compared with I-125 or Pd-103.^{2,3}
- The shorter half-life of Cs-131 (than I-125 or Pd-103) minimizes concerns for in-house decay and radioactivity storage.
- Cesium-131 may be more beneficial for certain lesions than either Pd-103 or I-125.^{2,3}

LUNG · HEAD & NECK · TONSILS · PROSTATE · COLORECTAL · OCULAR MELANOMA · BREAST* · BRAIN*



Manufactured and Distributed by IsoRay Medical, Inc.[®]
350 Hills Street, Suite 106 | Richland, WA 99354
877.447.6729 | www.IsoRay.com

ADV-067 R1

Cesium-131

Product Information

IsoRay's Cesium-131 Eye Brachytherapy cases are manufactured to each patient's prescription dose.

Order Configurations:

Standard configurations of up to 24 loose seeds are available with Air-Kerma strengths suitable for all eye plaque planning methodologies.

- IsoRay's Cesium-131 seed consists of welded titanium capsule containing the low energy gamma (X-ray) emitting isotope, Cesium-131, adsorbed onto an internal inorganic substrate.
- The seed configuration is designed to generate near isotropic emission of therapeutic radiation.
- IsoRay can ship eye plaques loaded to your specification directly to your facility.

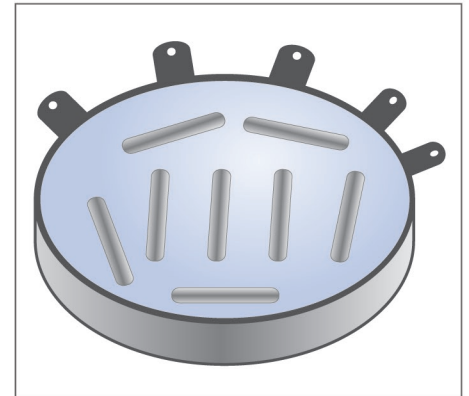
IsoRay's Cesium-131 loose seeds may be used to create a custom-made radioactive ophthalmic plaque by affixing Cesium-131 seeds into a seed carrier and gold or steel plaque.

1. COMS Group. Twelve year mortality rates and prognostic factors: COMS report no. 28. Arch Ophthalmol (Chicago). 124:1684-93, 2006.
 2. Rivard MJ, Melhus CS, Shiohanshi S, Morr J. The impact of prescription depth, dose rate, plaque size, and source loading on the central axis using ¹⁰³Pd, ¹²⁵I, and ¹³¹Cs. Brachytherapy 7:327-35, 2008.
 3. Melhus CS, Rivard MJ. COMS eye plaque brachytherapy dosimetry simulations for ¹⁰³Pd, ¹²⁵I, and ¹³¹Cs. Med Phys 35:3364-71, 2008.
- * Coming Soon

Order Information

Contact IsoRay Customer Service for More Information or an Order Form:

Customer Service
 509.375.5329 phone
 509.267.3670 fax
 customerservice@isoray.com



Isotope Dose Delivery Over Time			
Isotope	Half-Life	Energy	90% Dose
Cs-131	9.7 days	30.4 keV	33 days
Pd-103	17 days	20.8 keV	58 days
I-125	60 days	28.5 keV	204 days

LUNG · HEAD & NECK · TONSILS · PROSTATE · COLORECTAL · OCULAR MELANOMA · BREAST* · BRAIN*



Manufactured and Distributed by IsoRay Medical, Inc.
 350 Hills Street, Suite 106 | Richland, WA 99354
 877.447.6729 | www.IsoRay.com

ADV-067 R1