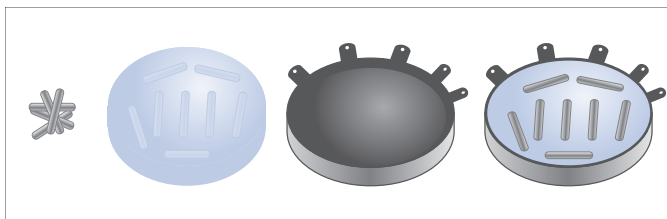
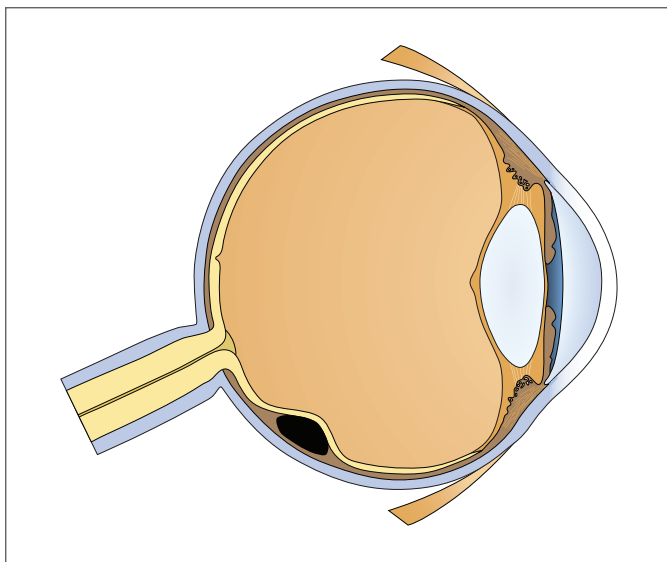




Expanding Brachytherapy Options  
Throughout the Body

**EYE PLAQUE BRACHYTHERAPY IS A SAFE AND EFFECTIVE MEANS OF EYE PRESERVATION IN CASES OF OCULAR MELANOMA<sup>1</sup>**



**Eye Plaque Treatment Using Cesium-131 Provides the Following Advantages:**

- Cesium-131 provides better dose homogeneity than either Iodine-125 or Palladium-103.<sup>2,3</sup>
- Cesium-131 allows for greater penetration of therapeutic dose while maintaining lower scleral dose compared with I-125 or Pd-103.<sup>2,3</sup>
- The shorter half-life of Cs-131 (than I-125 or Pd-103) minimizes concerns for in-house decay and radioactivity storage.
- Cesium-131 may be more beneficial for certain lesions than either Pd-103 or I-125.<sup>2,3</sup>

LUNG • HEAD & NECK • TONSILS • PROSTATE • COLORECTAL • OCULAR MELANOMA • BREAST\* • BRAIN\*

Manufactured and Distributed by IsoRay Medical, Inc.<sup>®</sup>  
350 Hills Street, Suite 106 | Richland, WA 99354  
877.447.6729 | www.IsoRay.com  
ADV-067 R0

Cesium-131



## Expanding Brachytherapy Options Throughout the Body

### Product Information

IsoRay's Cesium-131 Eye Brachytherapy cases are manufactured to each patient's prescription dose.

### Order Configurations:

Standard configurations of up to 24 loose seeds are available with Air-Kerma strengths suitable for all eye plaque planning methodologies.

- IsoRay's Cesium-131 seed consists of welded titanium capsule containing the low energy gamma (X-ray) emitting isotope, Cesium-131, adsorbed onto an internal inorganic substrate.
- The seed configuration is designed to generate near isotropic emission of therapeutic radiation.
- IsoRay can ship eye plaques loaded to your specification directly to your facility.

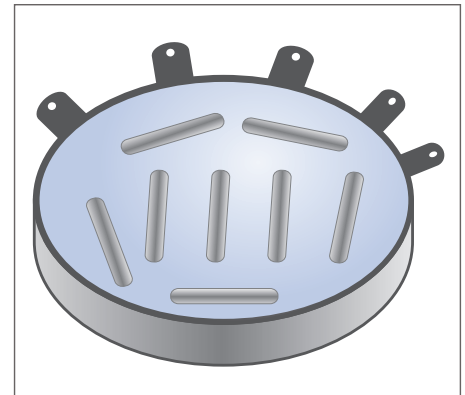
**IsoRay's Cesium-131 loose seeds may be used to create a custom-made radioactive ophthalmic plaque by affixing Cesium-131 seeds into a seed carrier and gold or steel plaque.**

1. COMS Group. Twelve year mortality rates and prognostic factors: COMS report no. 28. Arch Ophthalmol (Chicago). 124:1684-93, 2006.
  2. Rivard MJ, Melhus CS, Shiohansi S, Morr J. The impact of prescription depth, dose rate, plaque size, and source loading on the central axis using <sup>103</sup>Pd, <sup>125</sup>I, and <sup>131</sup>Cs. Brachytherapy 7:327-35, 2008.
  3. Melhus CS, Rivard MJ. COMS eye plaque brachytherapy dosimetry simulations for <sup>103</sup>Pd, <sup>125</sup>I, and <sup>131</sup>Cs. Med Phys 35:3364-71, 2008.
- \* Coming Soon

### Order Information

Contact IsoRay Customer Service for More Information or an Order Form:

Wanda Kucera  
509.375.5329 phone  
509.267.3670 fax  
wkucera@isoray.com



Isotope Dose Delivery Over Time			
Isotope	Half-Life	Energy	90% Dose
Cs-131	9.7 days	30.4 keV	33 days
Pd-103	17 days	20.8 keV	58 days
I-125	60 days	28.5 keV	204 days

LUNG • HEAD & NECK • TONSILS • PROSTATE • COLORECTAL • OCULAR MELANOMA • BREAST\* • BRAIN\*

Manufactured and Distributed by IsoRay Medical, Inc.<sup>®</sup>  
350 Hills Street, Suite 106 | Richland, WA 99354  
877.447.6729 | www.IsoRay.com  
ADV-067 R0

Cesium-131